



AT-A-GLANCE

# Family Literacy Initiative HIPPY

## FLI HIPPY IN LIBERIA, WEST AFRICA

**About  
FLI HIPPY**

### What is FLI HIPPY?

We are an early literacy home visiting program based on the Home Instruction for Parents of Preschool Youngsters (HIPPY) model and have a small Adult Literacy Program for parents of children in FLI HIPPY.

### International Collaborators

- » WE-CARE Foundation, Inc.
- » Friends of Liberia
- » HIPPY International
- » University of South Florida

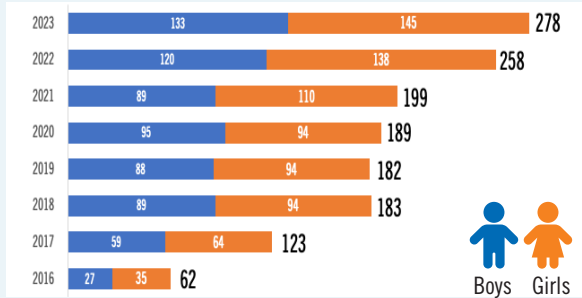
### FLI Background – Parents (Home Instructors)

	Numbers		Numbers*
Years in operation	8	Home Visitors/Supervisors	26
Funding to Date	US \$1,326,942	Coordinators	2
Communities Served	5	Students Served	726
Community Types	Urban 4 Rural 1	Ages of Students	3 to 7
		Cohorts Tracked	4

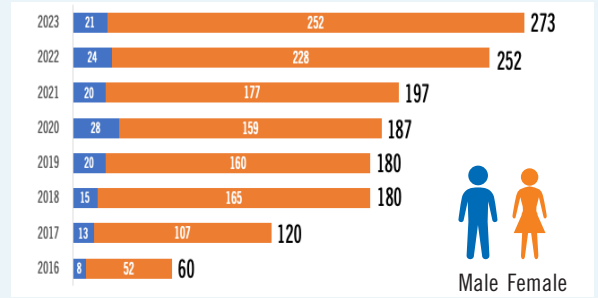
\*unduplicated

**Who We  
Serve**

### Children Served (Duplicated Count)

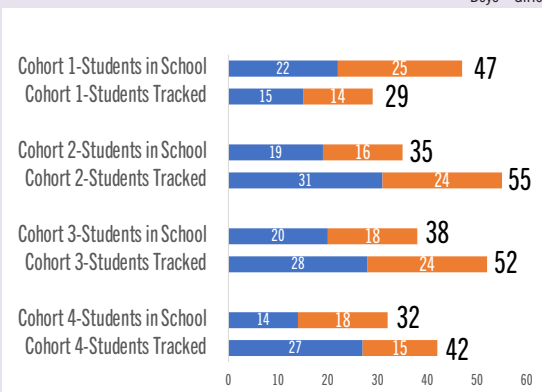


### Parents (Duplicated Count)

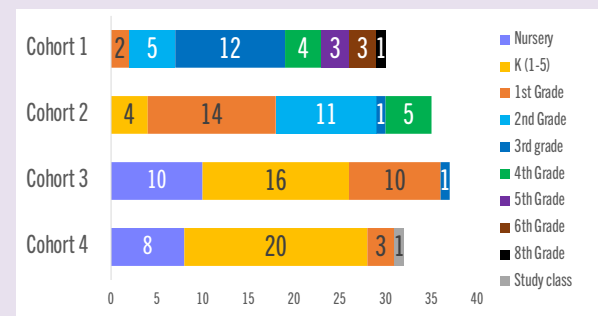


**Students**

### FLI HIPPY Total Students in School vs. Total Students Tracked (Unduplicated)



### FLI HIPPY Students by Grade Level



Cohort 1 Graduated FLI HIPPY in 2018. Academic year tracked 2022-2023.  
 Cohort 2 Graduated FLI HIPPY in 2019. Academic year tracked 2021-2022.  
 Cohort 3 Graduated FLI HIPPY in 2020. Academic year tracked 2020-2021.  
 Cohort 4 Graduated FLI HIPPY in 2021. Academic year tracked 2021-2022.

**Schools**

### About FLI HIPPY Schools

	Cohort 1	Cohort 2	Cohort 3	Cohort 4
Schools Involved	17	24	24	27
Grades involved	7	5	4	4
Teachers Involved	25	30	30	27
Avg Teacher Experience (yrs)	6	3.54	5.69	3.19



### Monitoring and Evaluation Committee

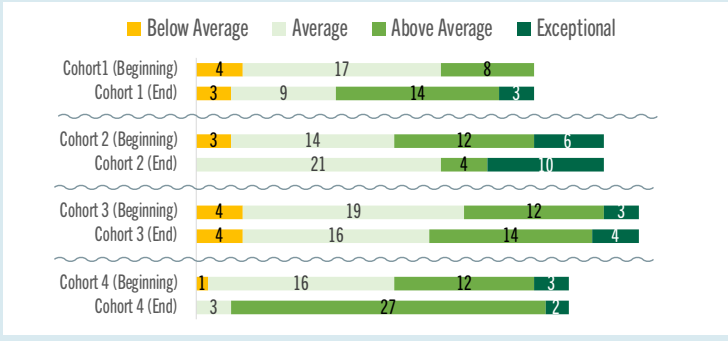
Ruby Joseph, MPA • [raj@usf.edu](mailto:raj@usf.edu)  
 Jo-Anne Manswell Butty, PhD • [jmbutty@gmail.com](mailto:jmbutty@gmail.com)  
 Ron Mertz, PhD • [devoemertz@sbcglobal.net](mailto:devoemertz@sbcglobal.net)

### For More Information

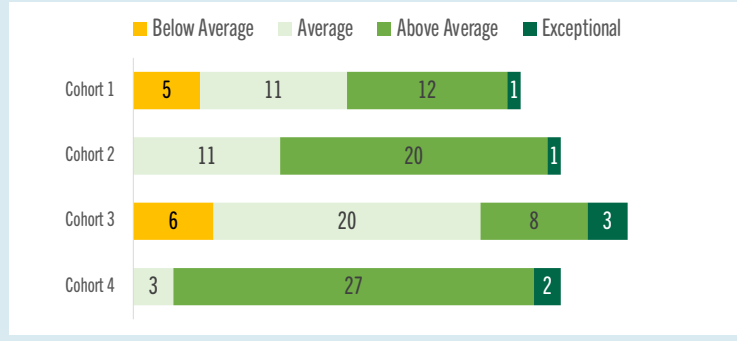
WE-CARE, Inc. • Yvonne Capehart • [yvonnecapehart@yahoo.com](mailto:yvonnecapehart@yahoo.com)  
[wcarelib@yahoo.com](mailto:wcarelib@yahoo.com) • +231-77511175

# Cohorts 1, 2, 3, & 4 Outcomes

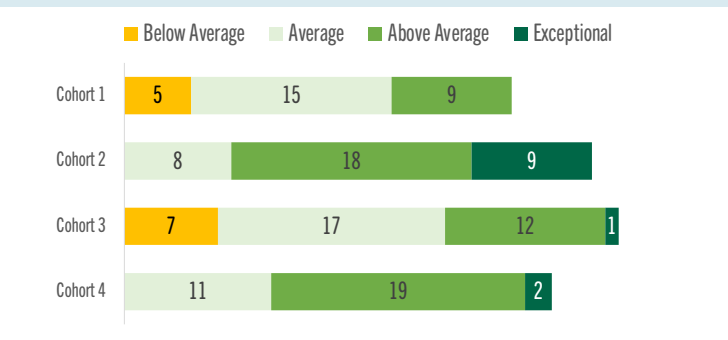
## Overall Academic Performance at the Beginning & End of the Year



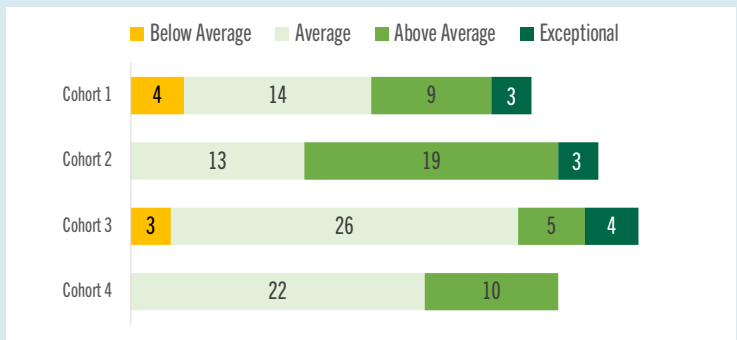
## English/Reading



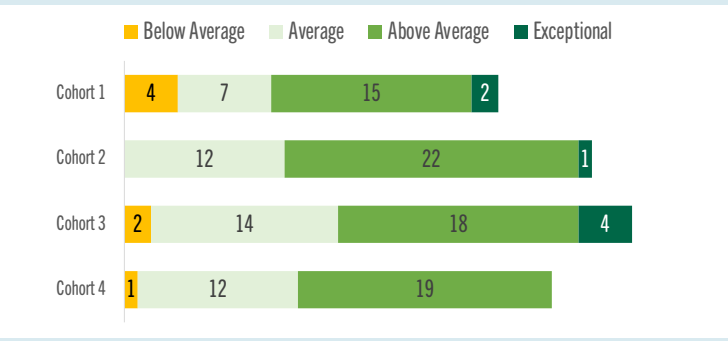
## Math Outcomes



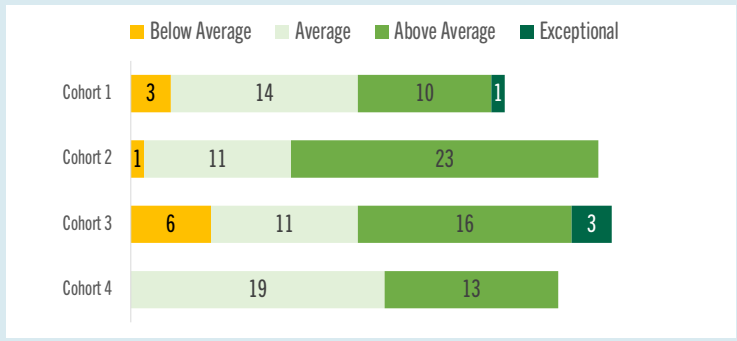
## Social Studies and Science



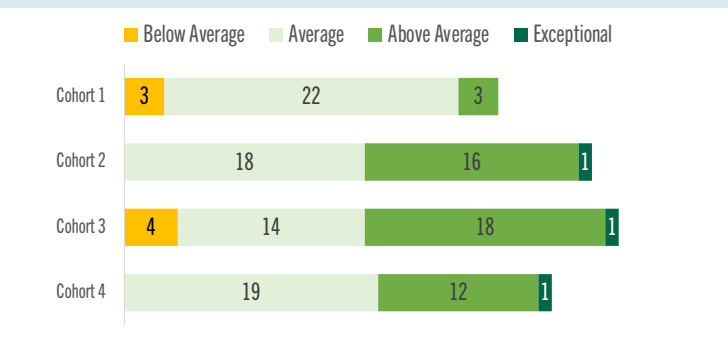
## Following Teacher Instructions



## Student Participation in Class



## Student Interaction with their Peers



## Student Promotions

